

Slide screws with resin nuts PY/PW series

Features

- **Developed by drawing upon KURODA's technical expertise in manufacturing high accuracy ball screws**
 - Screw shafts are manufactured according to the same degree of lead accuracy used for ball screws and have achieved high precision positioning.
- **Utilizing materials with excellent chemical and corrosion resistance**
 - Screw shafts can also be selected in stainless steel that has excellent corrosion resistance.
 - For nuts, resin with excellent chemical resistance is employed.
- **Lightweight resin lead screws with longer service life have been achieved**
 - With the introduction of resin components, the PY/PW series screws can contribute to the lightweight requirements of tabletop applications.

□ Summary of the specifications

Screw shaft diameter	ø8 mm
Lead	2 mm
Accuracy grade	PW series: C7 grade PY series: C10 grade
Shaft end type	Unfinished shaft ends
Product line	Standard product

□ Options available

Series	Additional shaft-end machining	Surface treatment (Anticorrosive black coating)	Change of grease type	Change of nut direction
P series	○	---	○	○

□ Model numbers of P series

Series	Shaft diameter	Lead	Shaft material	Nut material	Thread direction	Overall screw shaft length	Shaft end type	Thread length	Accuracy grade	Axial clearance	
Example model number	PW	10	04	G	P	R	0400	X	0300	C7	Y
	PW	10 or 12	04 or 10	G or S	P	R	To be shown with a 4-digit number in metric units (mm)	A, X	To be shown with a 4-digit number in metric units (mm)	C7	Y
10		04	G or S	L							
PY	10 or 12	04 or 10	G or S	P	R	To be shown with a 4-digit number in metric units (mm)	A, X	To be shown with a 4-digit number in metric units (mm)	CA	Y	
	10	04	G or S		L						

• For more details, refer to the specifications and data for each size.

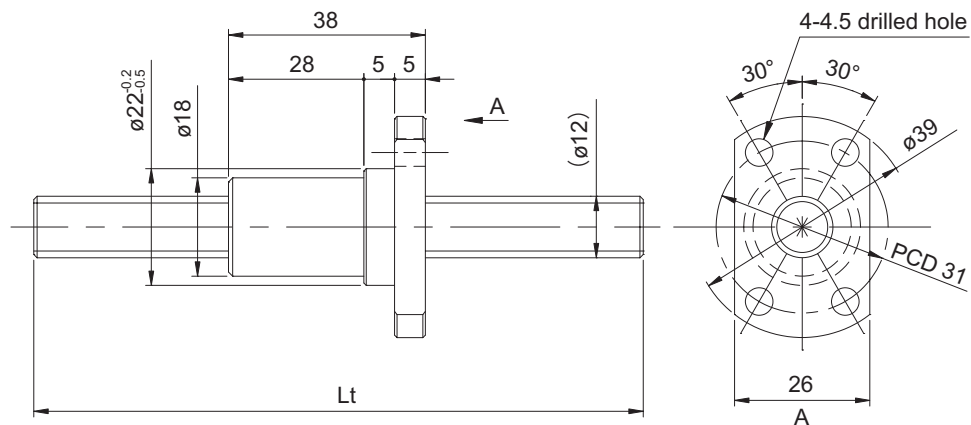
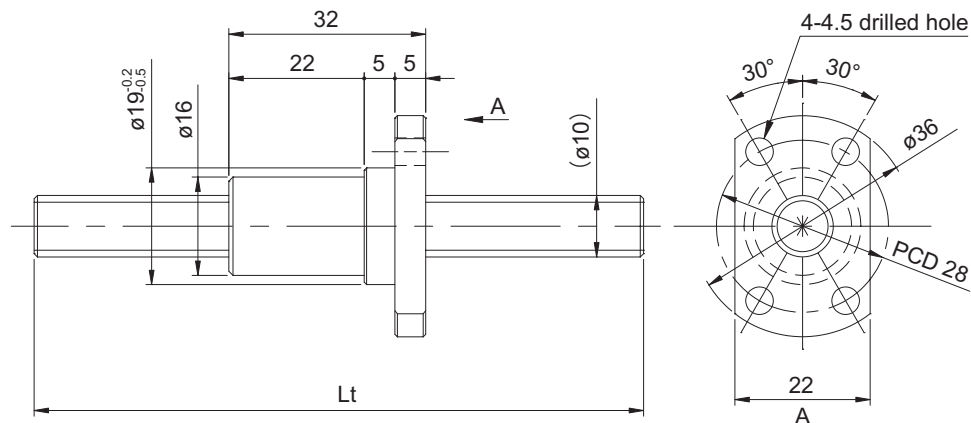
□ Materials

Part name	Material
Screw shaft	G: S45C S: SUS304
Nut	High rigidity engineering plastic (PPS) for sliding

□ Permissible axial load and rotational speed

Screw shaft diameter (mm)	Lead (mm)	Permissible axial load (practical index) (N)	Permissible rotational speed (min ⁻¹)
ø10	4	70	3000
	10		
ø12	4	100	3000
	10		

Slide screws with resin nuts (Accuracy grade C7, C10)



Screw shaft diameter $\phi 10, \phi 12$

(Unit: mm)

Model No.	Shaft diameter d	Lead L	Thread direction	Screw shaft		Accuracy grade	Lead accuracy Cumulative lead error	Axial clearance
				Overall length Lt	Root diameter d1			
PW1004*PR-0400A	10	4	Right-hand	400	(7.8)	C7	0.05/300	0.05 or less
PW1004*PR-0600A				600				
PW1004*PL-0400A			Left-hand	400				
PW1004*PL-0600A				600				
PW1010*PR-0400A		10	Right-hand	400				
PW1010*PR-0600A				600				
PY1004*PR-0400A	10	4	Right-hand	400	(7.8)	C10	0.21/300	0.10 or less
PY1004*PR-0600A				600				
PY1004*PL-0400A			Left-hand	400				
PY1004*PL-0600A				600				
PY1010*PR-0400A		10	Right-hand	400				
PY1010*PR-0600A				600				

- Alvania Grease S2 is applied as the lubricant.
- The recommended tightening torque for the mounting screw (M4) when fixing the resin nut in the nut housing is 80 N·cm.
- The asterisk * will be replaced by the material symbol G or S.

(Unit: mm)

Model No.	Shaft diameter d	Lead L	Thread direction	Screw shaft		Accuracy grade	Lead accuracy Cumulative lead error	Axial clearance
				Overall length Lt	Root diameter d1			
PW1204*PR-0400A	12	4	Right-hand	400	(10.0)	C7	0.05/300	0.05 or less
PW1204*PR-0800A				600				
PW1210*PR-0400A		10	Right-hand	400				
PW1210*PR-0800A				600				
PY1204*PR-0400A	12	4	Right-hand	400	(10.0)	C10	0.21/300	0.10 or less
PY1204*PR-0800A				800				
PY1210*PR-0400A		10	Right-hand	400				
PY1210*PR-0800A				800				

- Alvania Grease S2 is applied as the lubricant.
- The recommended tightening torque for the mounting screw (M4) when fixing the resin nut in the nut housing is 80 N·cm.
- The asterisk * will be replaced by the material symbol G or S.