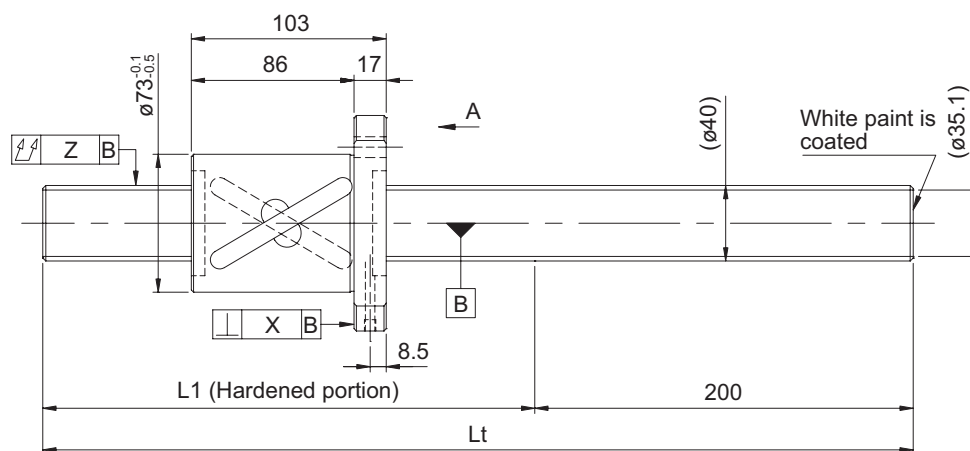
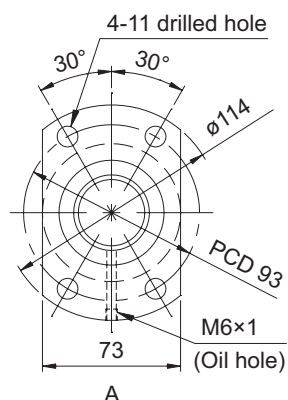


**Screw shaft
diameter ø40**

Shaft diameter (mm) - Lead (mm)	40 - 40
Number of circuits / Thread direction	1.5 turns 2 circuits / Right-hand
Ball diameter (mm)	6.350
Root diameter (mm)	35.1
Series	GY
Basic dynamic load rating C (N)	23900
Basic static load rating C0 (N)	66900
Accuracy grade / Axial clearance symbol	C10 / Y
Axial clearance (mm)	0.200 or less
Preload torque (N·cm)	----
Recirculation system	Tube method
Wiper	Brush wiper
Lubricant	Alvania Grease S2
Phosphate coating	Screw shaft, nut



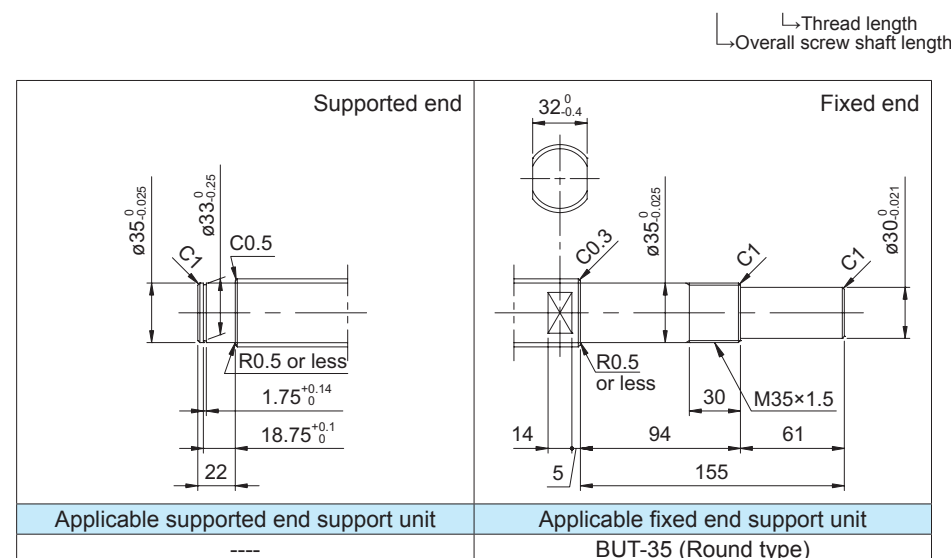
Model No. (Unfinished shaft ends)	L1	Lt	Maximum stroke (L1 - nut length)
GY4040BS-HUBR-2000A	1800	2000	1697
GY4040BS-HUBR-3000A	2800	3000	2697
GY4040BS-HUBR-4000A	3800	4000	3697

KURODA
JENATEC

**Screw shaft
diameter $\varnothing 40$**

Standard rolled ball screws are available with KURODA's recommended shaft end finish types for each size.

Model example: Unfinished shaft ends (See left figure) → Finished shaft ends
GY4040BS-HUBR-4000A → GY4040BS-HUBR-3930X3753-CAY



- Anticorrosive black coating (coating thickness: 1 to 2 μm) is available.

Lead accuracy	Accuracy of each part		Mass (kg)
Cumulative lead error	X	Z	
0.21/300	---	0.240	22.29
		0.400	32.13
		0.640	41.97