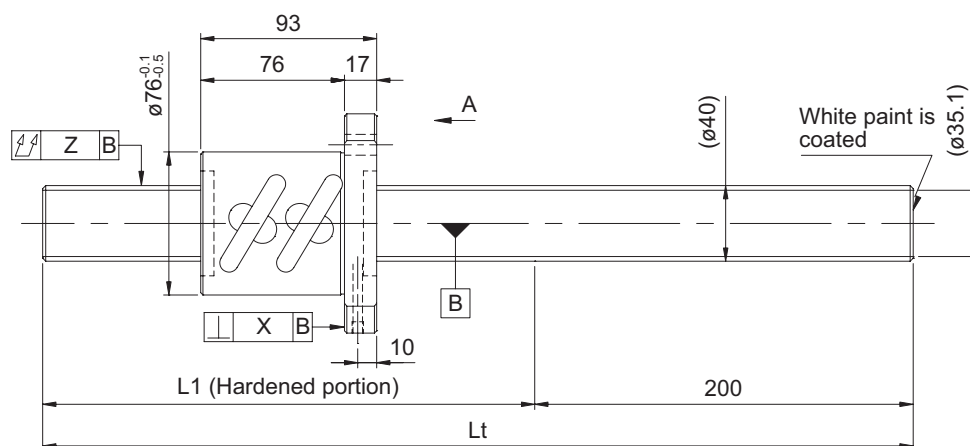
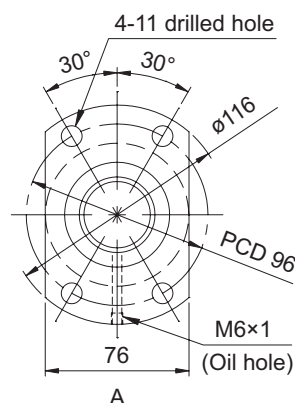


GY series (Accuracy grade C10)

• Ball screw specifications

Shaft diameter (mm) - Lead (mm)	40 - 10
Number of circuits / Thread direction	2.5 turns 2 circuits / Right-hand
Ball diameter (mm)	6.350
Root diameter (mm)	35.1
Series	GY
Basic dynamic load rating C (N)	37100
Basic static load rating C0 (N)	105600
Accuracy grade / Axial clearance symbol	C10 / Y
Axial clearance (mm)	0.200 or less
Preload torque (N·cm)	----
Recirculation system	Tube method
Wiper	Brush wiper
Lubricant	Alvania Grease S2
Phosphate coating	Screw shaft, nut



Model No. (Unfinished shaft ends)	L1	Lt	Maximum stroke (L1 - nut length)
GY4010ES-HUBR-2000A	1800	2000	1707
GY4010ES-HUBR-3000A	2800	3000	2707
GY4010ES-HUBR-4000A	3800	4000	3707

• At the time of delivery, grease is inserted inside of the nut, with rust-preventive oil also applied. Before and during use, apply lubricant where appropriate.

Screw shaft diameter $\phi 40$, Lead 10 (Round nut)

• Shaft end finish type

Standard rolled ball screws are available with KURODA's recommended shaft end finish types for each size.

Other than KURODA's recommended shaft end finish types described below, additional machining including keyways, tapped holes, and D-cut processing are also available if requested. Please contact KURODA with your orders. Model examples for finished shaft ends are described below.

Model example: Unfinished shaft ends (See left figure) → Finished shaft ends

GY4010ES-HUBR-4000A → GY4010ES-HUBR-3930X3753-CAY

Thread length
Overall screw shaft length

Supported end	Fixed end
Applicable supported end support unit	Applicable fixed end support unit
----	BUT-35 (Round type)

• Optional specifications

• Anticorrosive black coating (coating thickness: 1 to 2 μm) is available.

Lead accuracy	Accuracy of each part		Mass (kg)
Cumulative lead error	X	Z	
0.21/300	---	0.240	22.34
		0.400	32.18
		0.640	42.02