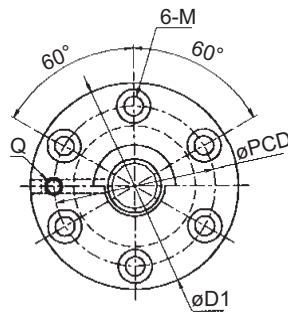
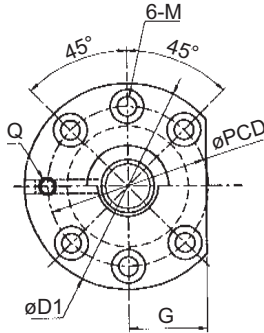


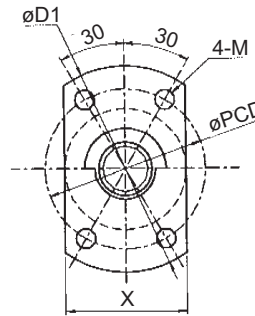
Custom Ball Screw: DEFLECTOR METHOD SINGLE NUT (Accuracy grade C0-C10)



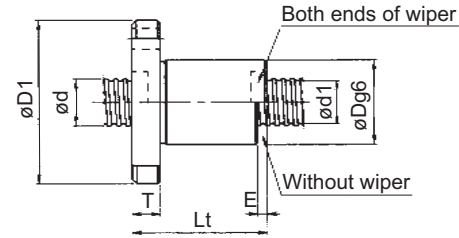
Flange type C



Flange type D



Flange type H



(Unit: mm)

Model No.	Screw shaft diameter d	Lead L	Ball diameter D_b	Root diameter d_r	Number of circuits Turn x Circuit	Basic dynamic load rating C (N)	Basic static load rating C_0 (N)	*Rigidity K_{vis} (N/ μ m)	Nut dimensions																Mass			
									Outer diameter D	Overall length L_t	Wiper material	Without wiper E	Flange thickness T	Flange outer diameter D_1	Flange type	Flange dimensions						Mounting hole				Nut (kg)	Screw shaft (kg/100mm)	
																W	X	Y	A	B	G	Q	PCD	M				
															Drill	Spot facing	Depth											
DR0601JS-HDNR	6	1	0.8000	5.3	1x3	550	1150	50	10	14.5	N	—	3.5	22	H	—	14	—	—	—	—	—	16	3.4	—	—	0.01	0.02
DR0801JS-HDNR	8	1	0.8000	7.3	1x3	650	1600	60	12	15	N	—	4	25	H	—	16	—	—	—	—	—	19	3.4	—	—	0.01	0.04
DR0802JS-HDNR	8	2	1.2000	7	1x3	1350	2300	60	14	21	N	—	4	27	H	—	17	—	—	—	—	—	21	3.4	—	—	0.02	0.04
DR1002JS-HDNR	10	2	1.2000	9	1x3	1550	3000	70	16	22	N	—	5	33	H	—	21	—	—	—	—	—	25	4.5	—	—	0.03	0.06
DR1202JS-HDNR	12	2	1.2000	11	1x3	1650	3600	85	18	22	N	—	5	35	H	—	22	—	—	—	—	—	27	4.5	—	—	0.04	0.09
DR1203JS-HDPR	12	3	2.0000	10.3	1x3	3450	6100	100	21	36	P	3	5	38	H	—	23	—	—	—	—	—	30	4.5	—	—	0.07	0.09
DR1404JS-HDPR	14	4	2.3812	12.1	1x3	4600	8600	110	26	40	P	3	10	45	H	—	29	—	—	16	—	M6	35	4.5	8	4.5	0.15	0.12
DR1605JS-CDPR	16	5	3.1750	13.5	1x3	7700	14600	120	28	47	P	3	10	47	C	—	—	—	—	—	—	—	37	4.5	8	4.4	0.20	0.16
DR1605JS-DDPR	16	5	3.1750	13.5	1x3	7700	14600	120	28	47	P	3	10	47	D	—	—	—	—	—	18.5	—	37	4.5	8	4.4	0.19	0.16
DR2005JS-CDPR	20	5	3.1750	17.5	1x3	8900	18900	150	35	46	P	3	11	58	C	—	—	—	—	—	—	M6	46	5.5	9.5	5.4	0.33	0.25
DR2005JS-DDPR	20	5	3.1750	17.5	1x3	8900	18900	150	35	46	P	3	11	58	D	—	—	—	—	—	22.5	M6	46	5.5	9.5	5.4	0.31	0.25
DR2005KS-CDPR	20	5	3.1750	17.5	1x4	11400	25200	200	35	51	P	3	11	58	C	—	—	—	—	—	—	M6	46	5.5	9.5	5.4	0.35	0.25
DR2005KS-DDPR	20	5	3.1750	17.5	1x4	11400	25200	200	35	51	P	3	11	58	D	—	—	—	—	—	22.5	M6	46	5.5	9.5	5.4	0.33	0.25
DR2010JS-CDPR	20	10	3.9688	16.6	1x3	10000	19000	150	35	63	P	3	11	58	C	—	—	—	—	—	—	M6	46	5.5	9.5	5.4	0.38	0.25
DR2010JS-DDPR	20	10	3.9688	16.6	1x3	10000	19000	150	35	63	P	3	11	58	D	—	—	—	—	—	22.5	M6	46	5.5	9.5	5.4	0.36	0.25

Note: • The rigidity indicated with the *mark in the above list represents the operational value based on the result of rigidity testing. This value is calculated from the elastic displacement measured when the axial load equivalent to 30% of basic dynamic load rating (C) is applied between the screw thread and the balls.

• Wiper material N: Without wiper, P: Plastic wiper