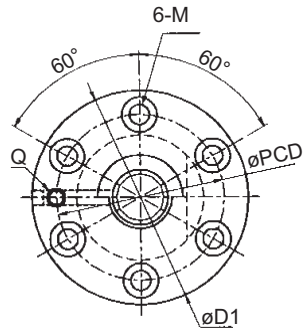
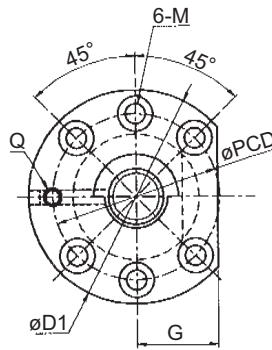


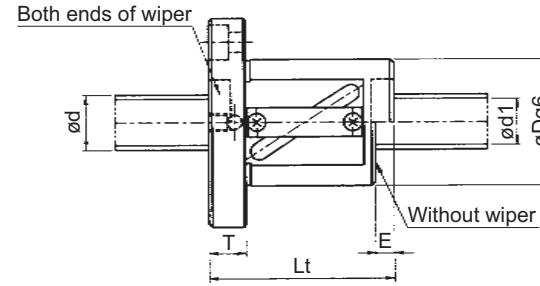
Custom Ball Screw: TUBE METHOD SINGLE NUT (Accuracy grade C1-C10)



Flange type C



Flange type D



(Unit: mm)

Model No.	Screw shaft diameter d	Lead L	Ball diameter D_b	Root diameter d_1	Number of circuits Turn x Circuit	Basic dynamic load rating C (N)	Basic static load rating C_0 (N)	*Rigidity K_{is} (N/ μ m)	Nut dimensions															Mass			
									Outer diameter D	Overall length L_t	Wiper material	Without wiper E	Flange thickness T	Flange outer diameter D_1	Flange type	Flange dimensions						Mounting hole			Nut (kg)	Screw shaft (kg/100mm)	
																W	X	Y	A	B	G	Q	PCD	Drill			Spot facing
GRA012ES-CAPR	100	12	7.9375	93.8	2.5x2	109450	451800	1130	160	123	P	6	28	220	C	-	-	-	-	-	Rc1/8	188	18	26	17.5	14.07	6.13
GRA012ES-DAPR	100	12	7.9375	93.8	2.5x2	109450	451800	1130	160	123	P	6	28	220	D	-	-	-	-	82	Rc1/8	188	18	26	17.5	13.46	6.13
GRA012FS-CAPR	100	12	7.9375	93.8	2.5x3	155000	677700	1630	160	159	P	6	28	220	C	-	-	-	-	-	Rc1/8	188	18	26	17.5	17.05	6.13
GRA012FS-DAPR	100	12	7.9375	93.8	2.5x3	155000	677700	1630	160	159	P	6	28	220	D	-	-	-	-	82	Rc1/8	188	18	26	17.5	16.43	6.13
GRA016ES-CAPR	100	16	9.5250	92.6	2.5x2	180000	739000	1250	170	165	P	12	32	243	C	-	-	-	-	-	Rc1/8	205	22	32	21.5	22.44	6.13
GRA016ES-DAPR	100	16	9.5250	92.6	2.5x2	180000	739000	1250	170	165	P	12	32	243	D	-	-	-	-	91	Rc1/8	205	22	32	21.5	21.60	6.13
GRA016FS-CAPR	100	16	9.5250	92.6	2.5x3	255000	1108500	1800	170	213	P	12	32	243	C	-	-	-	-	-	Rc1/8	205	22	32	21.5	27.25	6.13
GRA016FS-DAPR	100	16	9.5250	92.6	2.5x3	255000	1108500	1800	170	213	P	12	32	243	D	-	-	-	-	91	Rc1/8	205	22	32	21.5	26.41	6.13
GRA020ES-CAPR	100	20	9.5250	92.6	2.5x2	180000	739000	1250	170	177	P	12	32	243	C	-	-	-	-	-	Rc1/8	205	22	32	21.5	23.64	6.13
GRA020ES-DAPR	100	20	9.5250	92.6	2.5x2	180000	739000	1250	170	177	P	12	32	243	D	-	-	-	-	91	Rc1/8	205	22	32	21.5	22.80	6.13
GRA020FS-CAPR	100	20	9.5250	92.6	2.5x3	255000	1108500	1910	170	237	P	12	32	243	C	-	-	-	-	-	Rc1/8	205	22	32	21.5	29.65	6.13
GRA020FS-DAPR	100	20	9.5250	92.6	2.5x3	255000	1108500	1910	170	237	P	12	32	243	D	-	-	-	-	91	Rc1/8	205	22	32	21.5	28.81	6.13
GRC516ES-CAPR	125	16	9.5250	117.6	2.5x2	200400	946900	1520	200	169	P	12	36	290	C	-	-	-	-	-	Rc1/8	243	26	39	25.5	31.70	9.57
GRC516ES-DAPR	125	16	9.5250	117.6	2.5x2	200400	946900	1520	200	169	P	12	36	290	D	-	-	-	-	109	Rc1/8	243	26	39	25.5	30.38	9.57
GRC516FS-CAPR	125	16	9.5250	117.6	2.5x3	284100	1420400	2190	200	217	P	12	36	290	C	-	-	-	-	-	Rc1/8	243	26	39	25.5	37.94	9.57
GRC516FS-DAPR	125	16	9.5250	117.6	2.5x3	284100	1420400	2190	200	217	P	12	36	290	D	-	-	-	-	109	Rc1/8	243	26	39	25.5	36.62	9.57
GRC520ES-CAPR	125	20	9.5250	117.6	2.5x2	200400	946900	1520	200	181	P	12	36	290	C	-	-	-	-	-	Rc1/8	243	26	39	25.5	33.26	9.57
GRC520ES-DAPR	125	20	9.5250	117.6	2.5x2	200400	946900	1520	200	181	P	12	36	290	D	-	-	-	-	109	Rc1/8	243	26	39	25.5	31.94	9.57
GRC520FS-CAPR	125	20	9.5250	117.6	2.5x3	284100	1420400	2190	200	241	P	12	36	290	C	-	-	-	-	-	Rc1/8	243	26	39	25.5	41.06	9.57
GRC520FS-DAPR	125	20	9.5250	117.6	2.5x3	284100	1420400	2190	200	241	P	12	36	290	D	-	-	-	-	109	Rc1/8	243	26	39	25.5	39.74	9.57

Note: • The rigidity indicated with the *mark in the above list represents the operational value based on the result of rigidity testing. This value is calculated from the elastic displacement measured when the axial load equivalent to 30% of basic dynamic load rating (C) is applied between the screw thread and the balls.

• Wiper material P: Plastic wiper