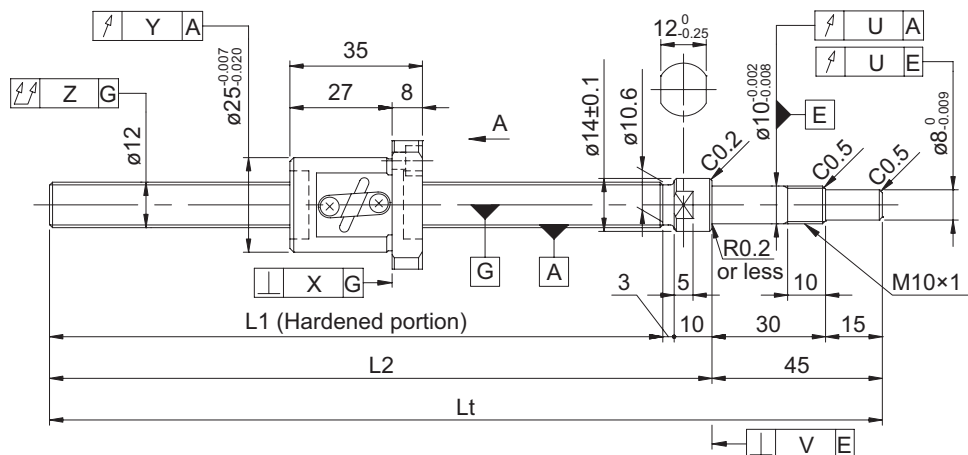
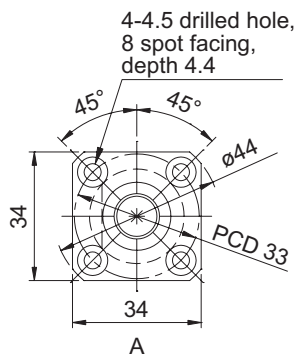


## GP series (Accuracy grade C3)

### Ball screw specifications

Shaft diameter (mm) - Lead (mm)	12 - 2	
Number of circuits / Thread direction	2.5 turns 1 circuit / Right-hand	
Ball diameter (mm)	1.5875	
Root diameter (mm)	10.6	
Series	GP	
Basic dynamic load rating C (N)	1540	2450
Basic static load rating C0 (N)	2050	4100
Accuracy grade / Axial clearance symbol	C3 / S	C3 / F
Axial clearance (mm)	0	0.005 or less
Preload torque (N·cm)	0.4 to 3.2	Up to 1.0
Spacer ball	1 : 1	None
Recirculation system	Tube method	
Wiper	Plastic wiper	
Lubricant	Alvania Grease S2	



Model No. (One shaft end finished)	Screw shaft length			Maximum stroke (L1 - nut length)	Lead accuracy		
	L1	L2	Lt		±E <sub>c</sub>	e <sub>c</sub>	e <sub>300</sub>
GP1202DS-AAPR-0300B-C3S	242	255	300	207	0.012	0.008	0.008
GP1202DS-AAPR-0300B-C3F							
GP1202DS-AAPR-0400B-C3S	342	355	400	307	0.013	0.010	0.008
GP1202DS-AAPR-0400B-C3F							

- Product with axial clearance of 0.005 or less (F) shown may be partially preloaded.
- Preload torque is a value before applying grease.
- At the time of delivery, grease is inserted inside of the nut, with rust-preventive oil also applied. Before and during use, apply lubricant where appropriate.

## Screw shaft diameter ø12, Lead 2

### Shaft end finish type

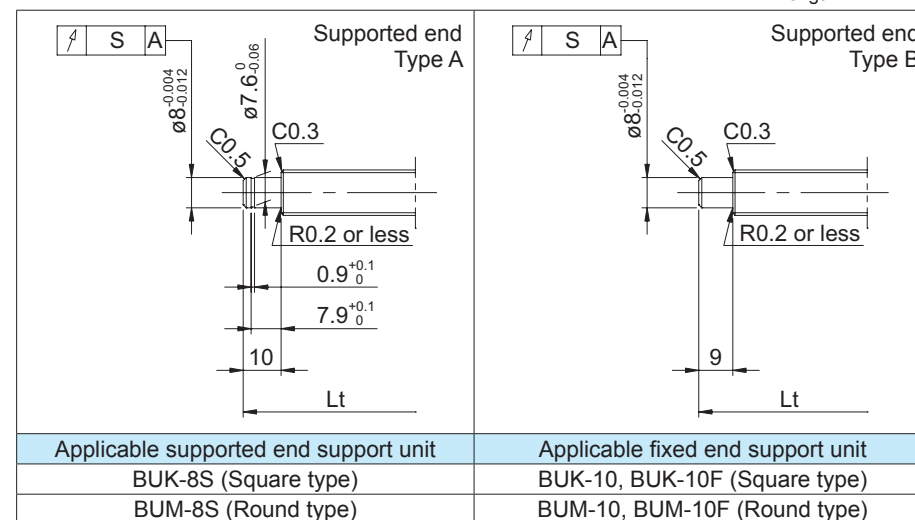
Standard precision ball screws are available with KURODA's recommended shaft end finish types for each size. The fixed end type is finished beforehand.

Regarding the supported shaft end, additional machining to KURODA's recommended shaft end finish type described below is available. Please contact KURODA with your orders. Model examples for finished shaft ends are described below.

**Model example:** Finished fixed end (See left figure) → Both shaft ends finished  
 GP1202DS-AAPR-0400B-C3F → GP1202DS-AAPR-0400X0332-C3F

Overall screw shaft length

Thread length



### Optional specifications

- Anticorrosive black coating (coating thickness: 1 to 2 μm) is available.

Accuracy of each part						Preload torque (N·cm)		Mass (kg)
X	Y	Z	S	U	V	Without clearance	With clearance	
0.008	0.010	0.030	0.011	0.007	0.003	0.4 to 3.2	----	0.35
						----	Up to 1.0	
0.008	0.010	0.040	0.011	0.007	0.003	0.4 to 3.2	----	0.43
						----	Up to 1.0	