

# Slide screws with resin nuts PY/PW series

## Features

- **Developed by drawing upon KURODA's technical expertise in manufacturing high accuracy ball screws**
  - Screw shafts are manufactured according to the same degree of lead accuracy used for ball screws and have achieved high precision positioning.
- **Utilizing materials with excellent chemical and corrosion resistance**
  - Screw shafts can also be selected in stainless steel that has excellent corrosion resistance.
  - For nuts, resin with excellent chemical resistance is employed.
- **Lightweight resin lead screws with longer service life have been achieved**
  - With the introduction of resin components, the PY/PW series screws can contribute to the lightweight requirements of tabletop applications.

### □ Summary of the specifications

Screw shaft diameter	ø8 mm
Lead	2 mm
Accuracy grade	PW series: C7 grade PY series: C10 grade
Shaft end type	Unfinished shaft ends
Product line	Standard product

### □ Options available

Series	Additional shaft-end machining	Surface treatment (Anticorrosive black coating)	Change of grease type	Change of nut direction
P series	○	---	○	○

### □ Model numbers of P series

Example model number	Series	Shaft diameter	Lead	Shaft material	Nut material	Thread direction	Overall screw shaft length	Shaft end type	Thread length	Accuracy grade	Axial clearance
Example model number	PW	10	04	G	P	R	0400	X	0300	C7	Y
	PW	10 or 12	04 or 10	G or S	P	R	To be shown with a 4-digit number in metric units (mm)	A, X	To be shown with a 4-digit number in metric units (mm)	C7	Y
		10	04	G or S		L					
	PY	10 or 12	04 or 10	G or S	P	R				CA	
		10	04	G or S		L					
						L					

• For more details, refer to the specifications and data for each size.

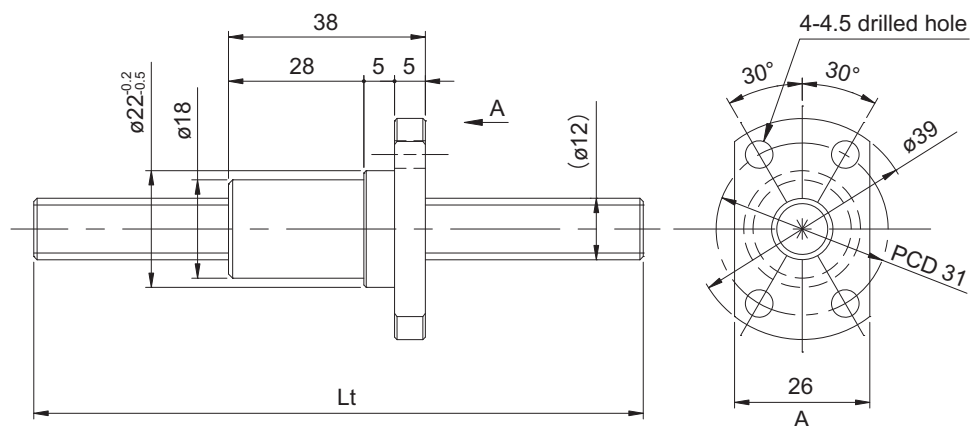
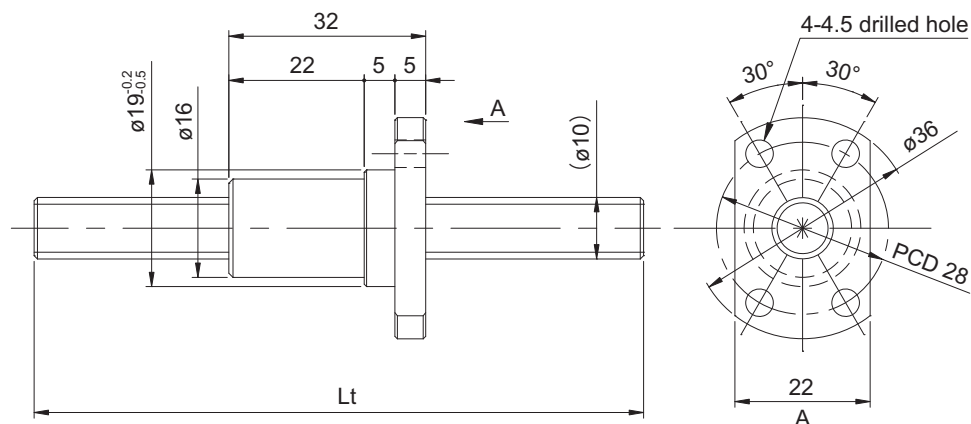
### □ Materials

Part name	Material
Screw shaft	G: S45C S: SUS304
Nut	High rigidity engineering plastic (PPS) for sliding

### □ Permissible axial load and rotational speed

Screw shaft diameter (mm)	Lead (mm)	Permissible axial load (practical index) (N)	Permissible rotational speed (min <sup>-1</sup> )
ø10	4	70	3000
	10		
ø12	4	100	3000
	10		

## Slide screws with resin nuts (Accuracy grade C7, C10)

Screw shaft diameter  $\phi 10, \phi 12$ 

(Unit: mm)

Model No.	Shaft diameter d	Lead L	Thread direction	Screw shaft		Accuracy grade	Lead accuracy Cumulative lead error	Axial clearance
				Overall length Lt	Root diameter d1			
PW1004*PR-0400A	10	4	Right-hand	400	(7.8)	C7	0.05/300	0.05 or less
PW1004*PR-0600A				600				
PW1004*PL-0400A			Left-hand	400				
PW1004*PL-0600A				600				
PW1010*PR-0400A		10	Right-hand	400				
PW1010*PR-0600A				600				
PY1004*PR-0400A	10	4	Right-hand	400	(7.8)	C10	0.21/300	0.10 or less
PY1004*PR-0600A				600				
PY1004*PL-0400A			Left-hand	400				
PY1004*PL-0600A				600				
PY1010*PR-0400A		10	Right-hand	400				
PY1010*PR-0600A				600				

- Alvania Grease S2 is applied as the lubricant.
- The recommended tightening torque for the mounting screw (M4) when fixing the resin nut in the nut housing is 80 N·cm.
- The asterisk \* will be replaced by the material symbol G or S.

(Unit: mm)

Model No.	Shaft diameter d	Lead L	Thread direction	Screw shaft		Accuracy grade	Lead accuracy Cumulative lead error	Axial clearance
				Overall length Lt	Root diameter d1			
PW1204*PR-0400A	12	4	Right-hand	400	(10.0)	C7	0.05/300	0.05 or less
PW1204*PR-0800A				600				
PW1210*PR-0400A		10	Right-hand	400				
PW1210*PR-0800A				600				
PY1204*PR-0400A	12	4	Right-hand	400	(10.0)	C10	0.21/300	0.10 or less
PY1204*PR-0800A				800				
PY1210*PR-0400A		10	Right-hand	400				
PY1210*PR-0800A				800				

- Alvania Grease S2 is applied as the lubricant.
- The recommended tightening torque for the mounting screw (M4) when fixing the resin nut in the nut housing is 80 N·cm.
- The asterisk \* will be replaced by the material symbol G or S.